

Customer :

customer

Customer part :

customer part

Comment :

Comment

S1=2.2

S2=2.97

Tmax=458

Tp S2=497.0

PI=0.43

HI=112

Sample =1654.10

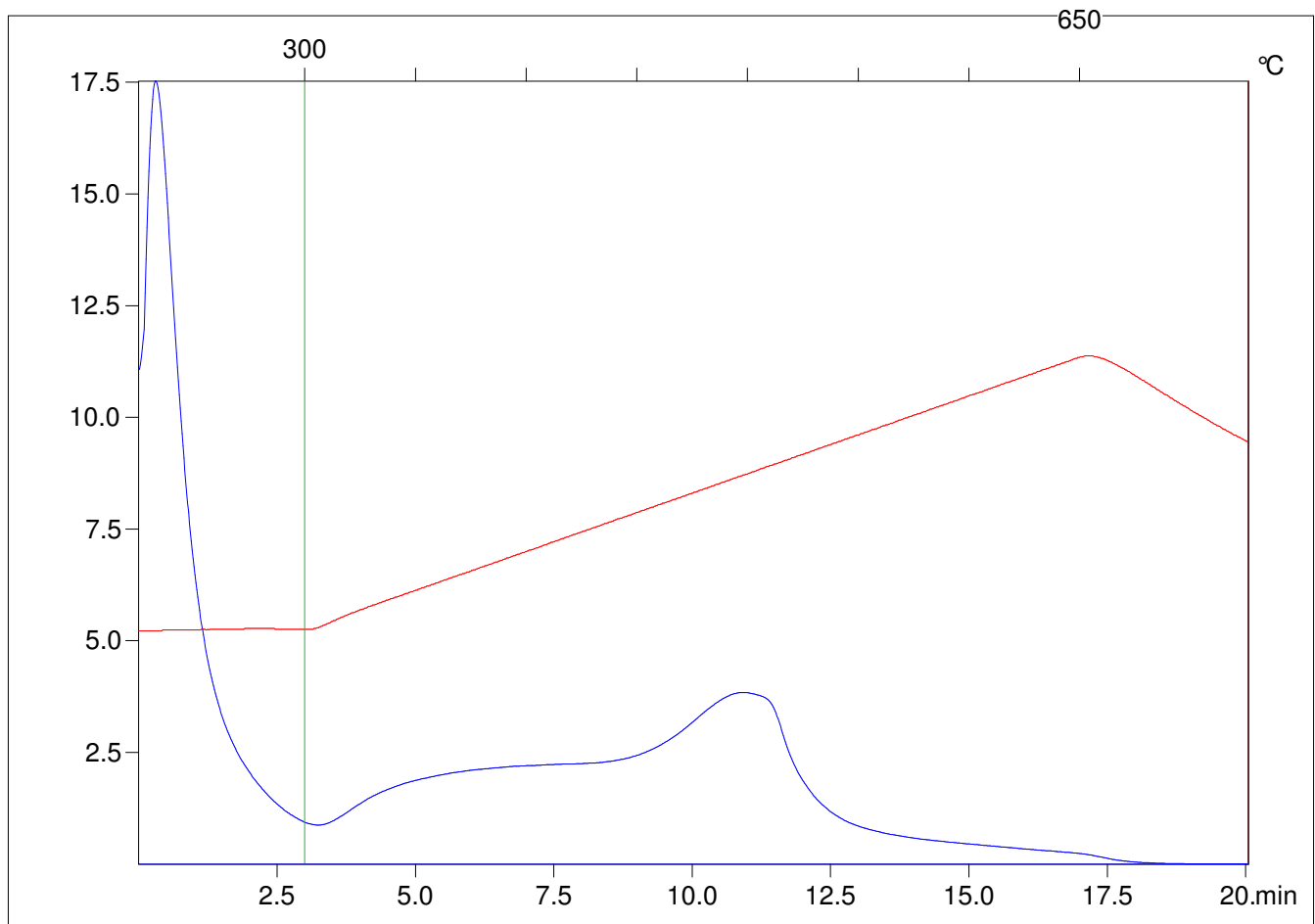
Method =Bulk Rock

Cycle=Basic

KFID(10\*9)=1444

Qty =70.3

TOC=2.66



C:\VINCI\PK1792\PK074.R00 : FID pyrolysis graphic

State

Pyro Status

Oxi Status